



BEACON FEN ENERGY PARK

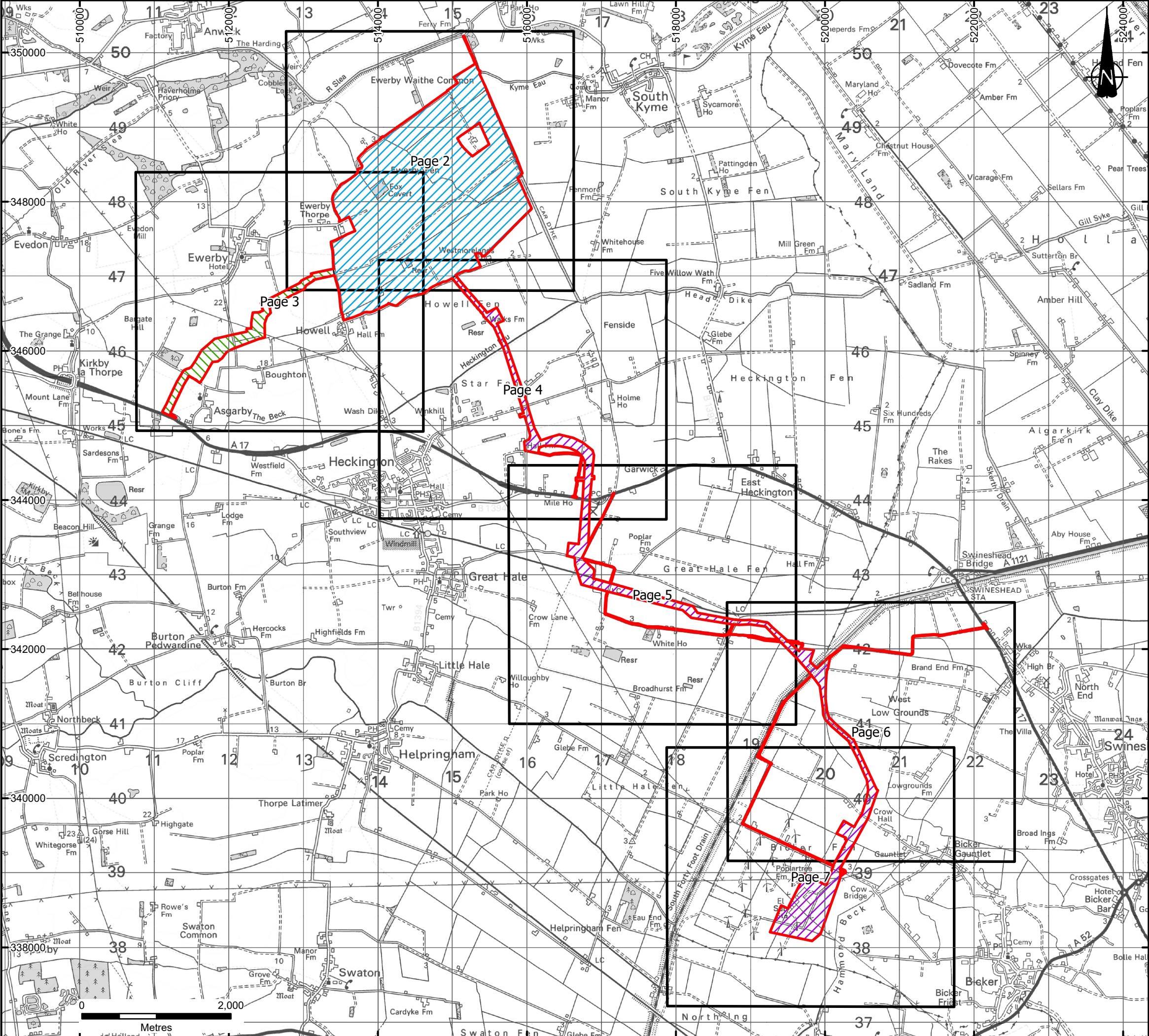
Planning Inspectorate Reference: EN010151

Appendix 17.1 Ground Conditions Desk Study – Part 4

Document Reference: 6.3 ES Volume 2, 6.3.102d

April 2025





KEY

- DCO Order Limits
- Solar Array Area
- Bespoke Access Corridor
- Cable Route Corridor
- Page Reference

Notes:

Bespoke Access Corridor and Cable Route Corridor shown for visual purposes only and have not been considered in this Report

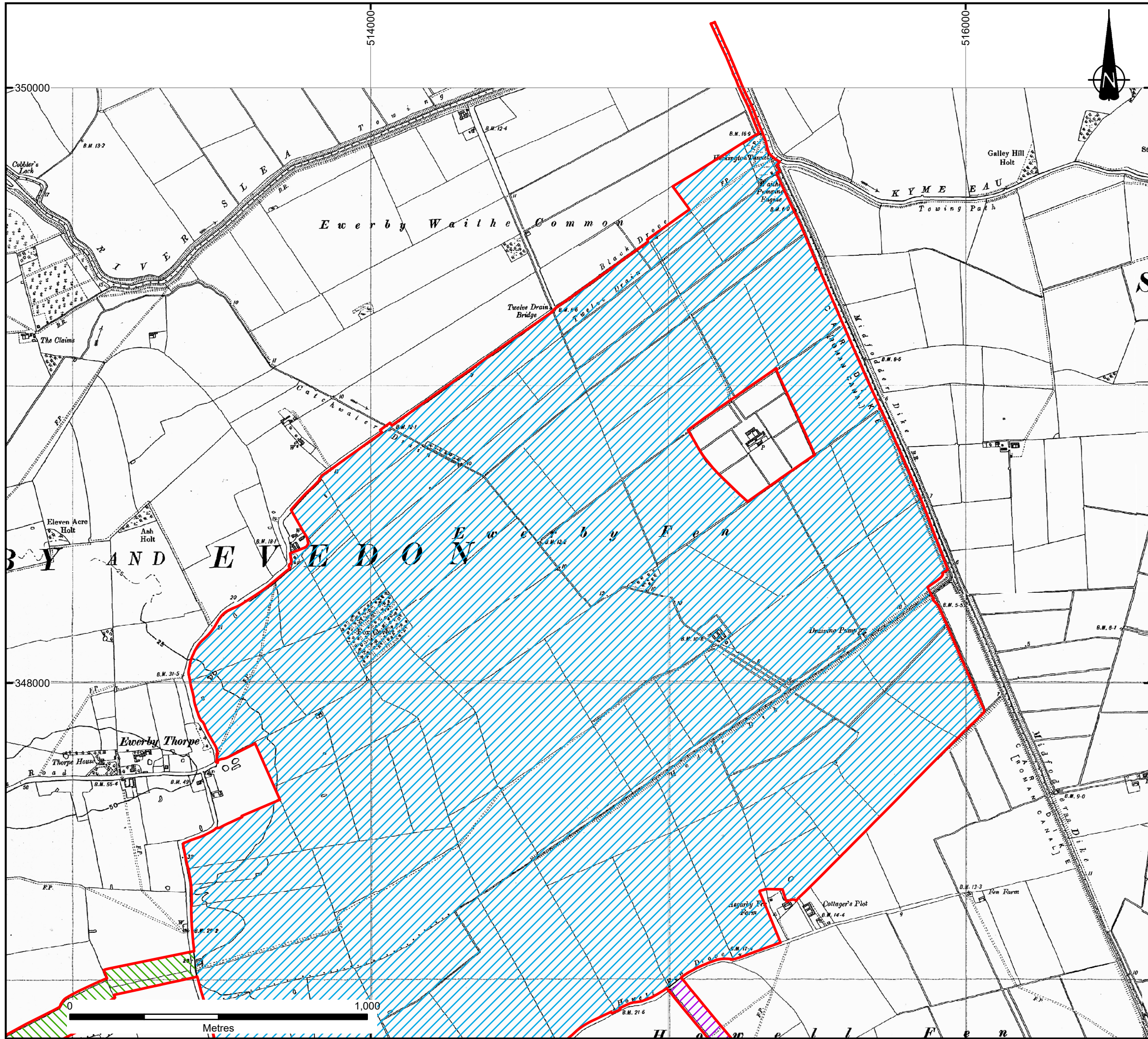
DCO Order Limits provided by Ardent Management on 04/02/2025.

© Crown Copyright and Landmark Information Group

© Crown copyright and database rights 2025 Ordnance Survey AC0000808122

1	FIRST ISSUE	05/03/25	CP	SG	RR
REVISION	DETAILS	DATE	DRAWN	CHKD	APPD
CLIENT					
BEACON FEN ENERGY PARK LTD					
PROJECT					
BEACON FEN ENERGY PARK					
DRAWING TITLE					
HISTORIC MAPPING - COUNTY SERIES: 1938-1950 SHEET 1 OF 7					
DRG No.		ST19595-435		REV	1
DRG SIZE		A3		SUIT. CODE	---
SCALE		1:50,000		DATE	07/03/2025
DRAWN BY		CP		APPROVED BY	RR

PART OF SLR



KEY

- DCO Order Limits
- Solar Array Area
- Bespoke Access Corridor
- Cable Route Corridor

Notes:

Bespoke Access Corridor and Cable Route Corridor shown for visual purposes only and have not been considered in this Report.

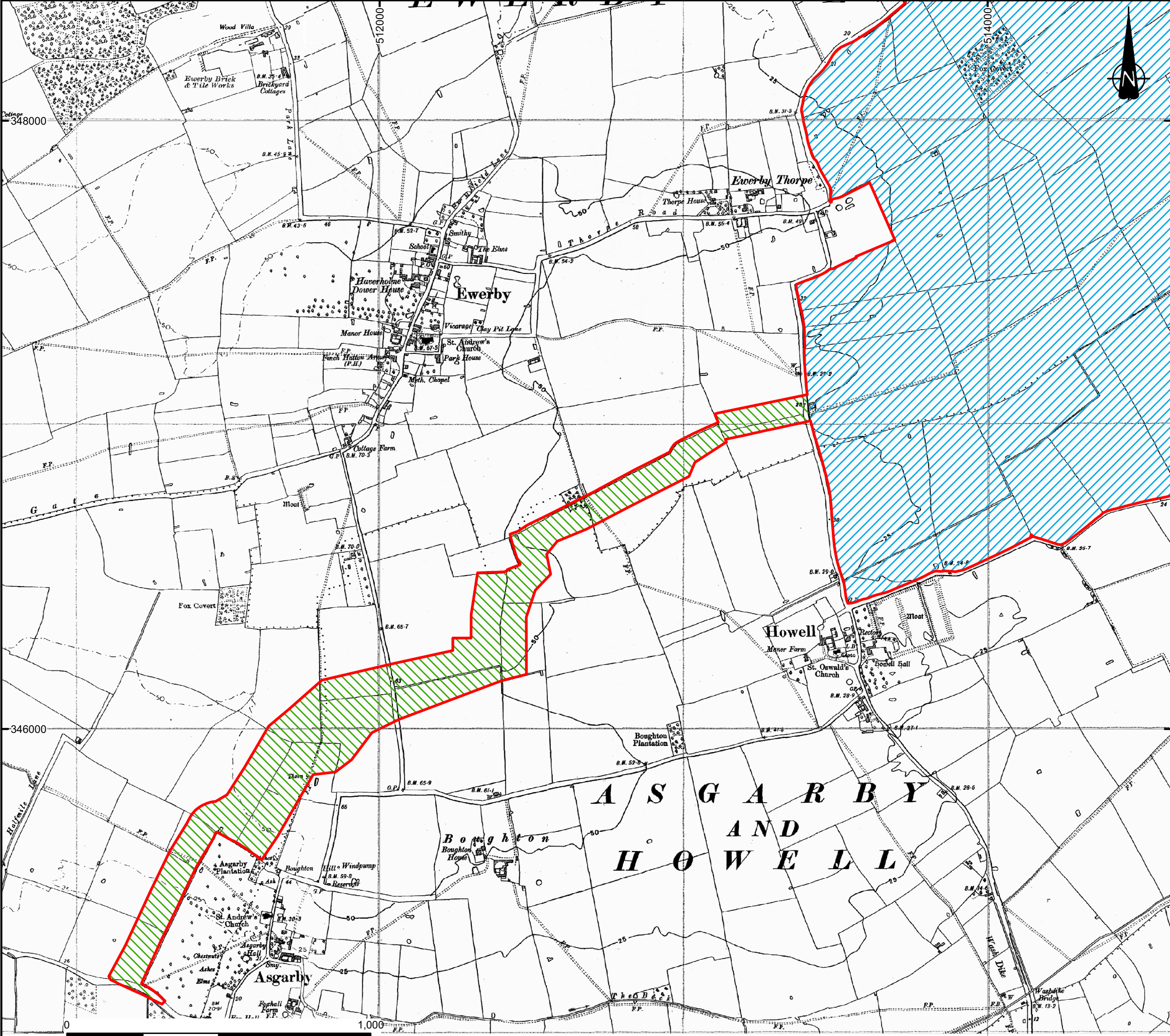
DCO Order Limits provided by Ardent Management on 04/02/2025.

© Crown Copyright and Landmark Information Group

Where mapping is not shown, data was unavailable.

1	FIRST ISSUE	05/03/25	CP	SG	RR
REVISION	DETAILS	DATE	DRAWN	CHKD	APPD
CLIENT					
BEACON FEN ENERGY PARK LTD					
PROJECT					
BEACON FEN ENERGY PARK					
DRAWING TITLE					
HISTORIC MAPPING - COUNTY SERIES: 1938-1950 SHEET 2 OF 7					
DRG No.		ST19595-435		REV	1
DRG SIZE		A3		SUIT. CODE	---
SCALE		1:12,500		DATE	07/03/2025
DRAWN BY		CP		APPROVED BY	RR

PART OF SLR



KEY

DCO Order Limits

Solar Array Area

Bespoke Access Corridor

Notes:

Bespoke Access Corridor and Cable Route Corridor shown for visual purposes only and have not been considered in this Report.

DCO Order Limits provided by Ardent Management on 04/02/2025.

© Crown Copyright and Landmark Information Group

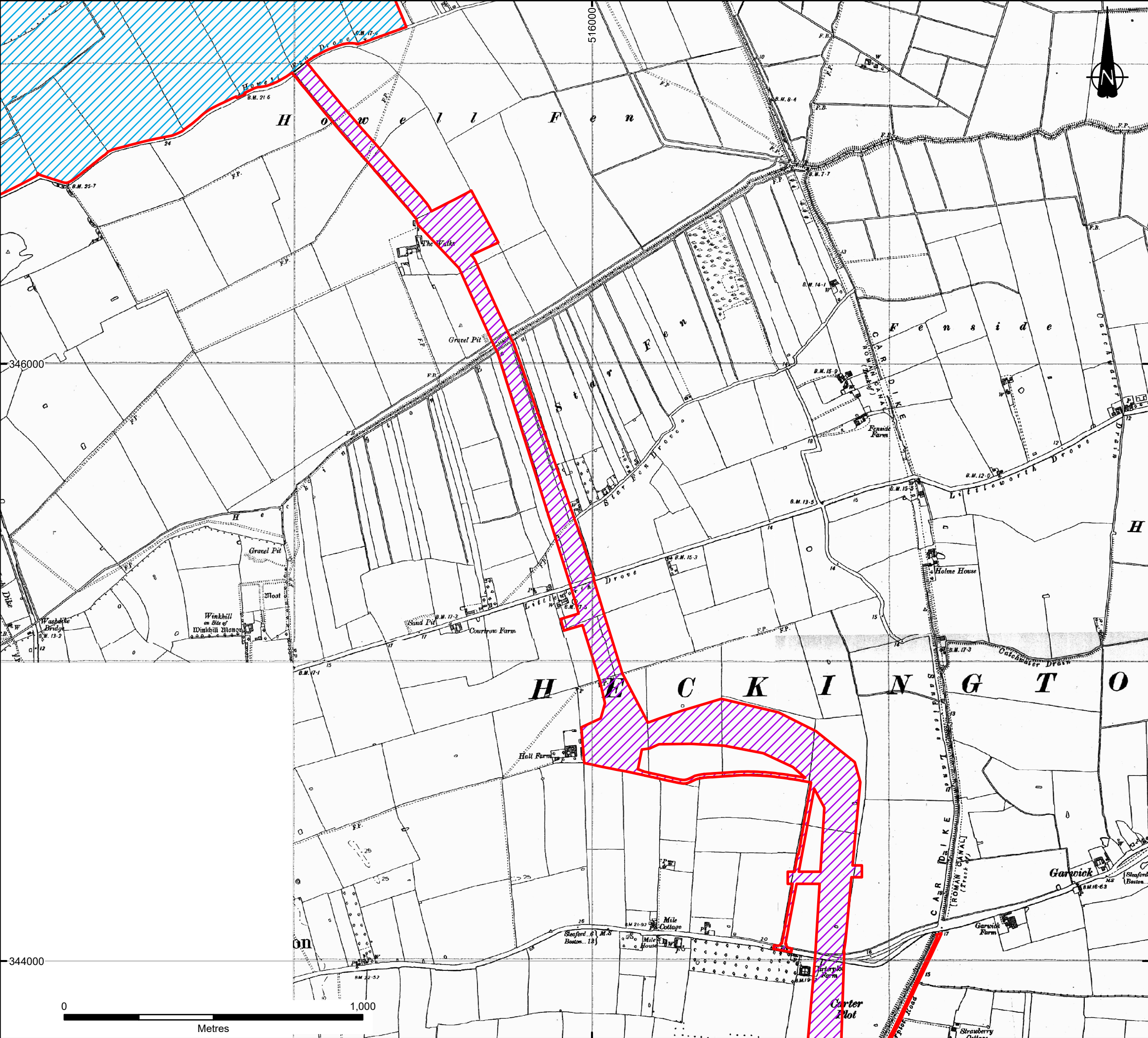
Where mapping is not shown, data was unavailable.

1	FIRST ISSUE	05/03/25	CP	SG	RR
REVISION	DETAILS	DATE	DRAWN	CHKD	APPD
CLIENT	BEACON FEN ENERGY PARK LTD				
PROJECT	BEACON FEN ENERGY PARK				
DRAWING TITLE	HISTORIC MAPPING - COUNTY SERIES: 1938-1950 SHEET 3 OF 7				
DRG No.	ST19595-435	REV	1	SUIT. CODE	---
DRG SIZE	A3	SCALE	1:12,500	DATE	07/03/2025
DRAWN BY	CP	CHECKED BY	SG	APPROVED BY	RR

**wardell
armstrong**

**PART OF SLR**





KEY

DCO Order Limits

Solar Array Area

Cable Route Corridor

Notes:

Bespoke Access Corridor and Cable Route Corridor shown for visual purposes only and have not been considered in this Report.

DCO Order Limits provided by Ardent Management on 04/02/2025.

© Crown Copyright and Landmark Information Group

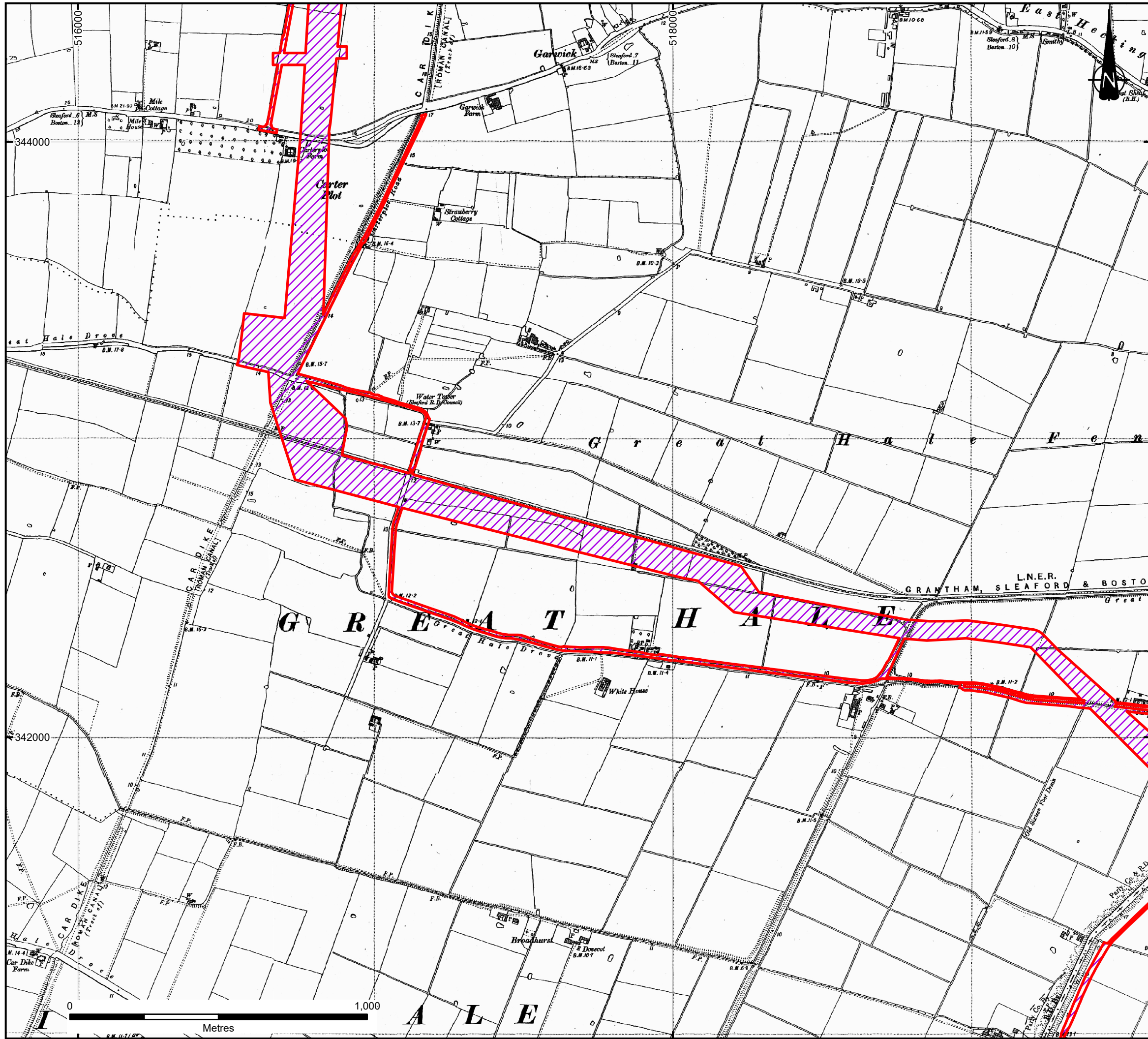
Where mapping is not shown, data was unavailable.

1	FIRST ISSUE	05/03/25	CP	SG	RR
REVISION	DETAILS	DATE	DRAWN	CHKD	APPD
CLIENT					
BEACON FEN ENERGY PARK LTD					
PROJECT					
BEACON FEN ENERGY PARK					
DRAWING TITLE					
HISTORIC MAPPING - COUNTY SERIES: 1938-1950 SHEET 4 OF 7					
DRG No.		ST19595-435		REV	1
DRG SIZE		A3		SUIT. CODE	---
SCALE		1:12,500		DATE	07/03/2025
DRAWN BY		CP		APPROVED BY	RR
CHECKED BY		SG			

wardell
armstrong

PART OF SLR

© Copyright Reserved



KEY

- DCO Order Limits
- Cable Route Corridor

Notes:

Bespoke Access Corridor and Cable Route Corridor shown for visual purposes only and have not been considered in this Report.

DCO Order Limits provided by Ardent Management on 04/02/2025.

© Crown Copyright and Landmark Information Group

Where mapping is not shown, data was unavailable.

1	FIRST ISSUE	05/03/25	CP	SG	RR
REVISION	DETAILS	DATE	DRAWN	CHKD	APPD

CLIENT

BEACON FEN ENERGY PARK LTD

PROJECT

BEACON FEN ENERGY PARK

DRAWING TITLE

HISTORIC MAPPING - COUNTY SERIES:
1938-1950
SHEET 5 OF 7

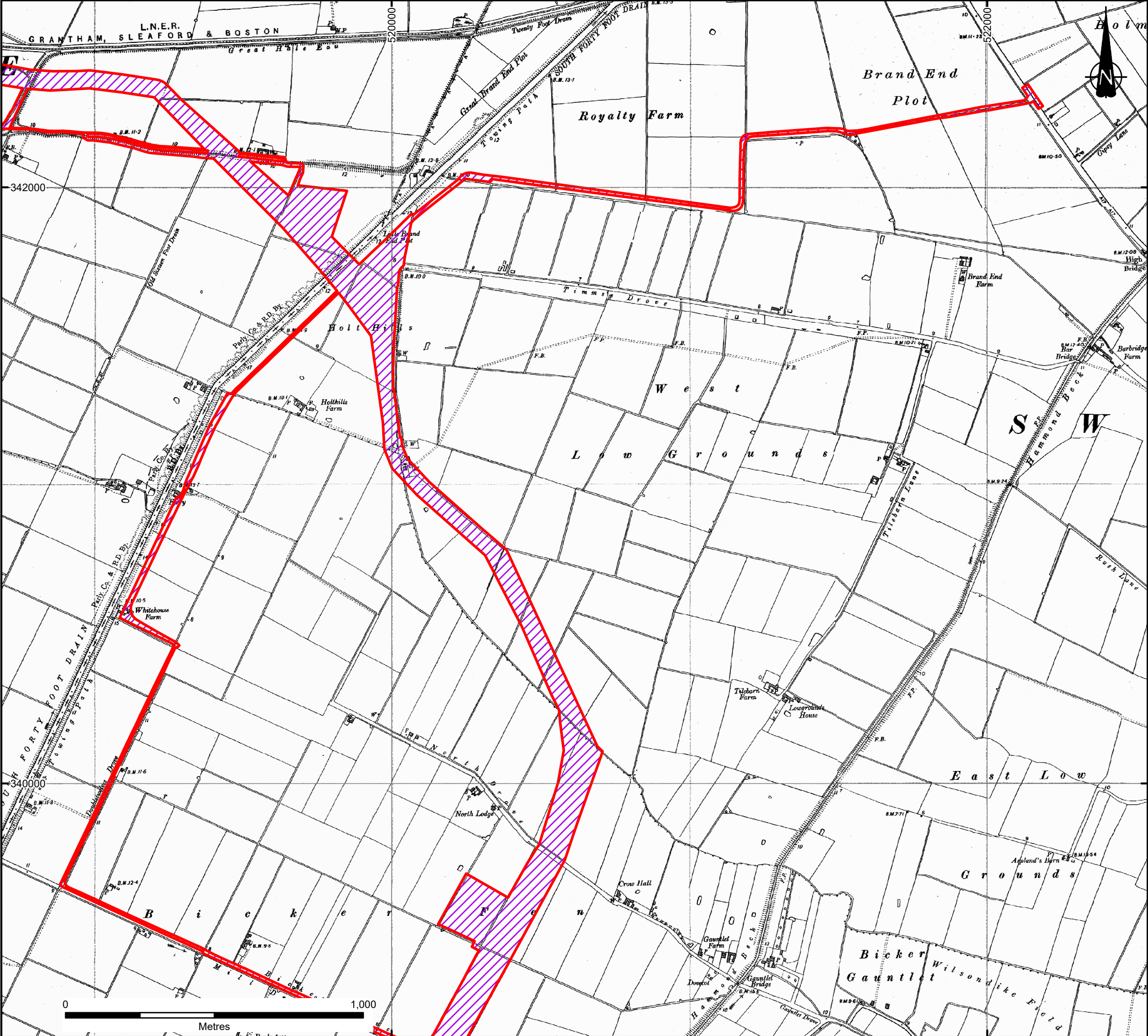
DRG No.	ST19595-435	REV	1	SUIT. CODE	---
DRG SIZE	A3	SCALE	1:12,500	DATE	07/03/2025
DRAWN BY	CP	CHECKED BY	SG	APPROVED BY	RR



wardell
armstrong

PART OF  SLR





KEY

- DCO Order Limits
- Cable Route Corridor

Notes:

Bespoke Access Corridor and Cable Route Corridor shown for visual purposes only and have not been considered in this Report.

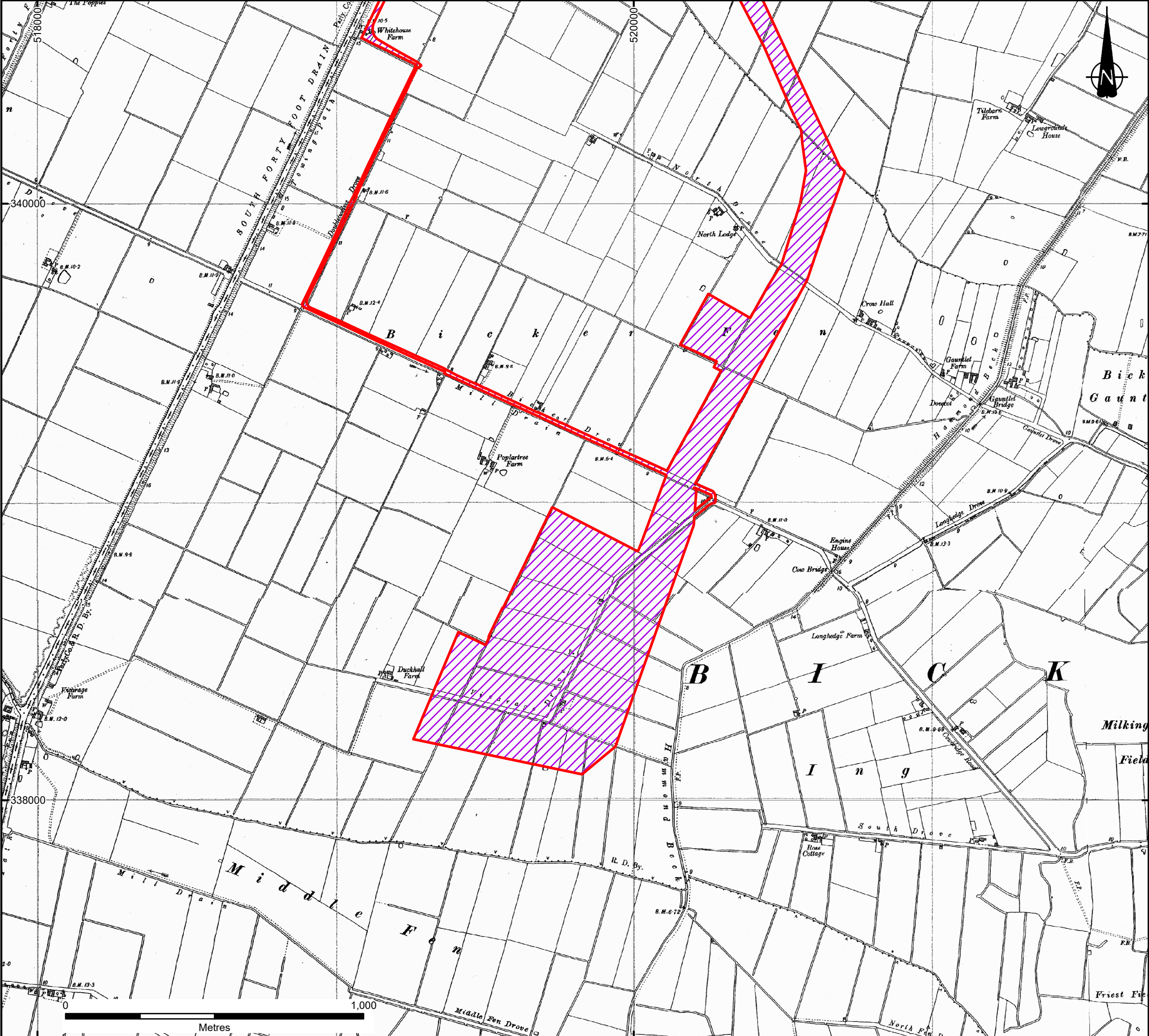
DCO Order Limits provided by Ardent Management on 04/02/2025.

© Crown Copyright and Landmark Information Group

Where mapping is not shown, data was unavailable.

1	FIRST ISSUE	05/03/25	CP	SG	RR
REVISION	DETAILS	DATE	DRAWN	CHKD	APPD
CLIENT					
BEACON FEN ENERGY PARK LTD					
PROJECT					
BEACON FEN ENERGY PARK					
DRAWING TITLE					
HISTORIC MAPPING - COUNTY SERIES: 1938-1950 SHEET 6 OF 7					
DRG No.	ST19595-435		REV	1	SUIT. CODE
DRG SIZE	A3	SCALE	1:12,500		DATE
DRAWN BY	CP	CHECKED BY	SG	APPROVED BY	
				RR	





KEY

DCO Order Limits

Cable Route Corridor

Notes:

Bespoke Access Corridor and Cable Route Corridor shown for visual purposes only and have not been considered in this Report.

DCO Order Limits provided by Ardent Management on 04/02/2025.

© Crown Copyright and Landmark Information Group

Where mapping is not shown, data was unavailable.

1	FIRST ISSUE	05/03/25	CP	SG	RR
REVISION	DETAILS	DATE	DRAWN	CHKD	APPD
CLIENT					
BEACON FEN ENERGY PARK LTD					
PROJECT					
BEACON FEN ENERGY PARK					
DRAWING TITLE					
HISTORIC MAPPING - COUNTY SERIES: 1938-1950 SHEET 7 OF 7					
DRG No.		ST19595-435		REV	1
DRG SIZE		A3		SUIT. CODE	---
SCALE		1:12,500		DATE	07/03/2025
DRAWN BY		CP		APPROVED BY	RR

wardell
armstrong

PART OF